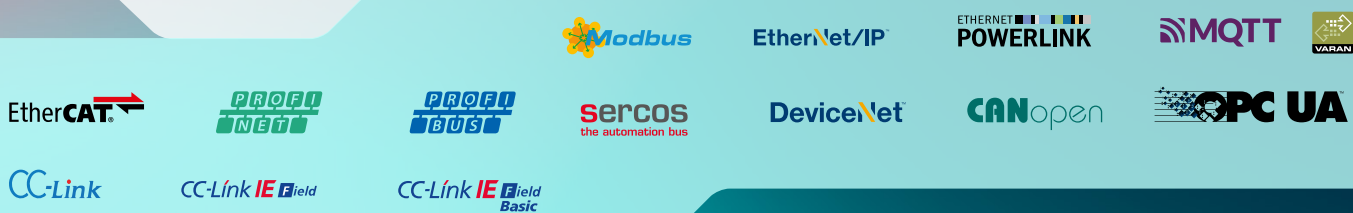
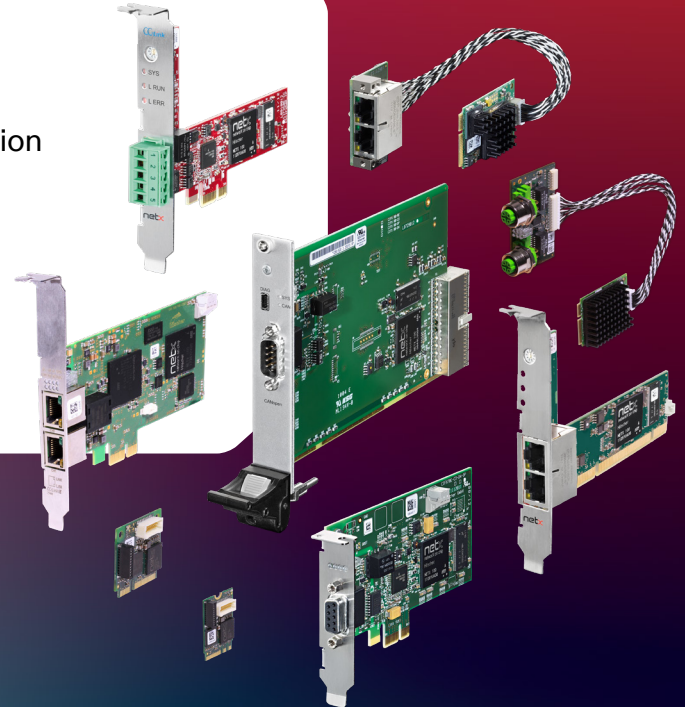


PC Cards

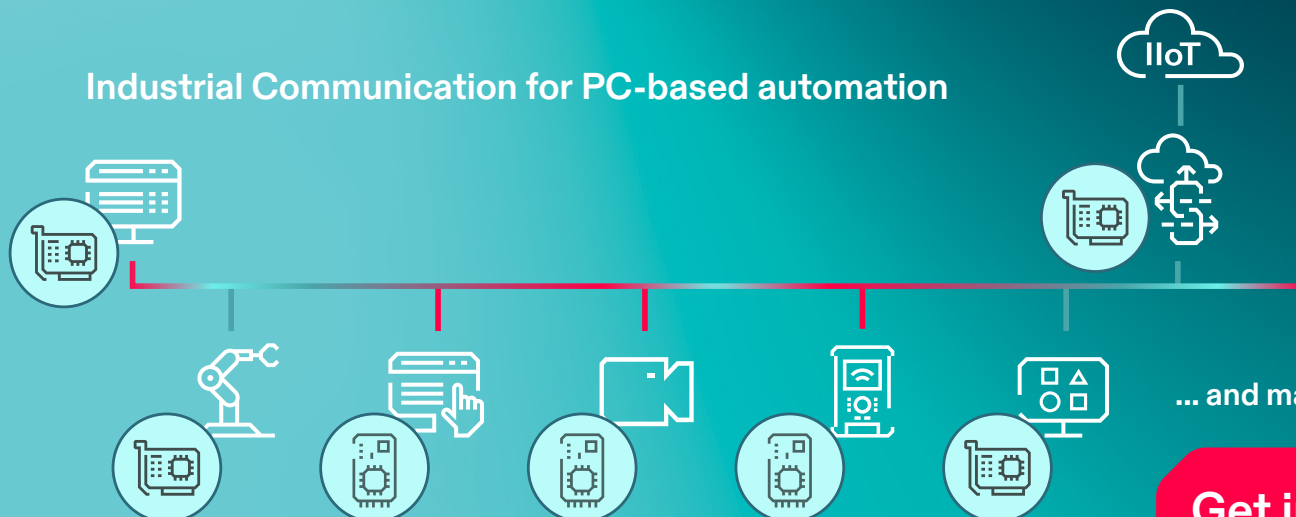


For Fieldbus, Industrial Ethernet & embedded IIoT

- Universal PC cards for **master and slave** applications
- One solution for **all industrial protocols** and **all relevant formats**
- Huge offering of **device drivers** for smooth integration in **every IPC** platform
- Fast commissioning with **all components** from **one supplier**
- Seamless integration of all cards with same **API**, **same driver & same tools**



Industrial Communication for PC-based automation



... and many more

Get in touch
www.hilscher.com

PC Cards

Unique diversity & simplicity for every application



Industrial PC



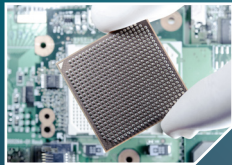
Vision System



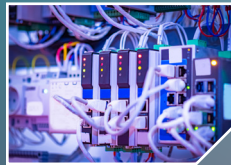
HMI Panel



Robotic



Semiconductor



Control System



Simulation



Edge Devices

Smallest PC cards on the automation market:
M.2 2230 & hPCIe

ALL FORMATS & ALL NETWORKS

Form factor Product	Slave only	Universal card Master & Slave	Fieldbus					Industrial Ethernet							2-Channel	Security-ready		
			CANopen	CC-Link	DeviceNet	PROFINET	CC-Link IE Basic	CC-Link IE Basic	EtherCAT	EtherNet/IP	ETHERCAT POWERLINK	Modbus	PROFINET	Sercos			1)	2) PC UA
PCI CIFX 50	X	✓	✓	✓	✓	✓	X	✓	✓	✓	✓	✓	✓	✓	✓	X	✓	X
Compact PCI CIFX 80	X	✓	✓	X	✓	✓	X	✓	✓	✓	✓	✓	✓	✓	X	X	X	
PCI Express CIFX 50E	X	✓	✓	✓	✓	✓	✓	✓	✓	✓	✓	✓	✓	✓	X	✓	X	
Low Profile PCIe CIFX 70E	X	✓	✓	X	✓	✓	✓	✓	✓	✓	✓	✓	✓	✓	X	X	X	
Mini PCI Express CIFX 90E	X	✓	✓	✓	✓	✓	X	✓	✓	✓	✓	✓	✓	✓	X	✓	X	
Mini PCIe halfsize CIFX HPCIe 90	✓	X	✓	X	✓	✓	X	✓	✓	✓	✓	✓	✓	X	✓	X	✓	
M.2 2242 Key B+M CIFX M224290	✓	X	✓	X	✓	✓	X	✓	✓	✓	✓	✓	✓	X	✓	X	✓	
M.2 2230 Key A+E CIFX M223090	✓	X	✓	X	✓	✓	X	✓	✓	✓	✓	✓	✓	X	✓	X	✓	
M.2 3042 Key B+M CIFX M3042100	X	✓	✓	X	✓	✓	X	✓	✓	✓	✓	✓	✓	✓	X	X	X	

1) Slave only 2) also MPI 3) Fieldbus only

