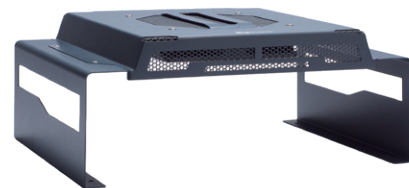
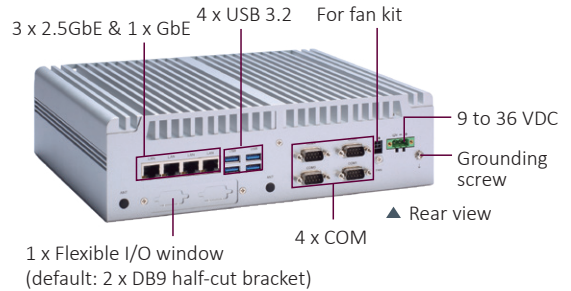
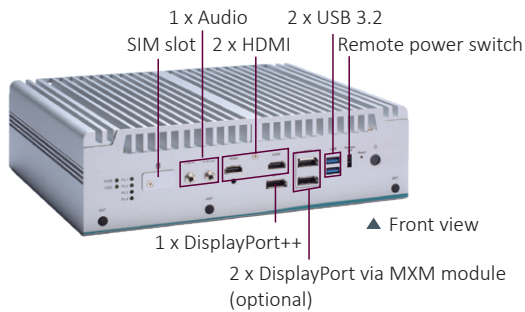


eBOX671B

Fanless Embedded System with LGA1700 Socket BTL-S/14th/13th/12th Gen Intel® Core™ Processors, Intel® R680E, 2 HDMI, 1 DisplayPort, 6 USB, 4 LANs, MXM 3.1 Type A, and 9 to 36 VDC



Features

- LGA1700 socket BTL-S/14th/13th/12th Gen Intel® Core™ processors
- Dual DDR5-4800 SO-DIMM, up to 96GB
- 4 LAN with optional PoE support
- Dual 2.5" SATA SSD/HDD drive bays with RAID 0 & 1
- Supports high speed NVMe storage (M.2 Key M 2280)
- Supports MXM 3.1 Type A, up to 5 display outputs
- Wide operating temperature range from -40°C to +65°C
- Wide range power input from 9 to 36 VDC
- Supports flexible I/O windows via PCIe Mini Card modules

Specifications

Standard Color	Silver
Construction	Aluminum extrusion and heavy-duty steel, IP40
CPU	LGA1700 socket for BTL-S/14th/13th/12th Gen Intel® Core™ processors, up to 65W*
System Memory	2 x 262-pin DDR5-4800 ECC/non ECC SO-DIMM, up to 96GB**
Chipset	Intel® R680E
BIOS	AMI

Specifications

System I/O Outlet	Front side 2 x HDMI 1.4b (1 x lockable) 1 x DisplayPort 1.2a 2 x DisplayPort 1.4a via optional MXM kit 2 x USB 3.2 Gen 2 1 x power button 1 x remote switch 1 x front-access SIM slot with cover (for M.2 Key B) 1 x reset switch connector 3 x antenna opening 1 x audio (Mic-in/Line-out)	Rear side 4 x USB 3.2 Gen 2 3 x 2.5 GbE* LAN (Intel® I226-IT) 1 x GbE* LAN (Intel® I219-LM) *4 x PoE (optional, via AX98266 PoE board) (IEEE802.3at, up to 60W) 2 x RS-232/422/485 with auto flow 2 x RS-232 1 x Phoenix type VDC power input connector 1 x flexible I/O window (default: 2 x DB9 half-cut bracket) 1 x grounding screw 2 x antenna opening
Watchdog Timer	255 levels, 1 to 255 sec.	
Storage	2 x 2.5" SATA HDD/SSD (up to 15 mm height; RAID 0, 1 supported) 1 x M.2 Key M 2280 socket for NVMe storage (PCIe x4 signal) 1 x mSATA (enable in BIOS setting)	
Expansion Interface	1 x full-size PCI Express Mini Card slot (USB 2.0 + PCIe + SIM + mSATA signal) 1 x M.2 Key E 2230 socket (for Wi-Fi 6E) (USB 2.0 signal) 1 x M.2 Key B 3052 socket (for 5G) (PCIe x2 signal) 1 x internal SIM slot for PCIe Mini Card slot 1 x MXM3.1 Type A connector	
TPM	TPM 2.0	
System Indicator	1 x green LED for system power 1 x orange LED for HDD activity 4 x green LED for programmable	
Power Input	9 to 36VDC with ignition for standard Optional PoE function supports 24V DC input only	
Operating Temperature	12th/13th/14th CPU (up to 65W) without MXM module -40°C to +65°C (-40°F to +149°F) (with W.T. DRAM & SSD)** BTL-S CPU (up to 65W) without MXM module -40°C to +60°C (-40°F to +140°F) (with W.T. DRAM & SSD)**	
Relative Humidity	10% to 90% relative humidity, non-condensing	
Shock	IEC 60068-2-27 (with SSD: 50G, half-sine, and 11 ms duration)	
Vibration	IEC 60068-2-64 (with SSD: 3Grms STD, random, 5 to 500 Hz, and 1 hr/axis)	
Dimensions (W x D x H)	280 x 210 x 80.5 mm (11.02" x 8.26" x 3.16")	
Weight (net/gross)	4.2 kg (9.25 lbs)/5 kg (11.02 lbs)	
Certifications	CE, FCC Class A, and UKCA	
EOS Support	Win 10 IoT (20H2/21H1/21H2), Win 11 IoT, and Linux	

*Please refer to the user manual for the supported CPU list.

**Intel® Bartlett Lake-S and 14th Gen processors support a maximum single SO-DIMM capacity of 48GB.

***CPU power settings can be adjusted in the BIOS to optimize performance and operating temperature.

Ordering Information

Standard

eBOX671B-ALD-GbE (P/N: E36K671B00)	Fanless embedded system with LGA1700 socket BTL-S/14th/13th/12th Gen Intel® Core™ processors, Intel® R680E, 2 HDMI, 1 DisplayPort, 6 USB, 4 LAN, and 9 to 36 VDC
---------------------------------------	--

Optional

2.5" SATA HDD	80GB or above
2.5" SATA SSD	100GB or above
DDR5 SO-DIMM	8GB to 32GB
mSATA	64GB or above
E29R129104	Wall mount kit
E29R129119	DIN-rail kit
	Wi-Fi/LTE module
509000001500	24V 120W power adapter
	Power cord
E392903102	AX92903 CAN bus PCI Express Mini module

Ordering Information

Optional

E392902103	AX92902 LAN PCI Express Mini module
E392918103	AX92918 dual LAN PCI Express Mini module
590000063500	DIO cable_DB9_100 mm (for optional 8-CH DIO on flexible I/O window) (up to 2 ports)
E29R129129	ACC129-E671B-FAN (fan kit)
E29R129130	ACC129-A2000-WT (W.T. NVIDIA RTX™ A2000 MXM module) (M3A2000-VYW-A1) * Supports two additional DisplayPort outputs. * Requires use with a fan kit.
E29R129127	ACC129-T1000-WT (W.T. NVIDIA RTX™ T1000 MXM module) (M3T1000-PN-A) * Supports two additional DisplayPort outputs.
E29R129135	ACC129-A500-WT (W.T. NVIDIA RTX™ A500 MXM module) (M3A500-PPW-A2) * No support for two additional DisplayPort outputs.
50906A24000E	24V 230W power adapter (for MXM module use)
E29R321100	ACC321-B00-406 (M.2 W.T. 5G module) (RM520N-GL)
E29R129131	ACC129-THRM-5G (5G thermal kit with bracket & pad)
83982661000E	AX98266 POE board SFP for eBOX671-521 (Assembly form required)

* Specifications and certifications may vary based on different requirements.

Packing List

1 x thermal grease
1 x 3-pin terminal block connector
1 x remote power switch cable
4 x foot pad
2 x HDD bracket
1 x screw pack
2 x DRAM thermal pad

Power Protection

DC Version

OVP (over voltage protection)
UVP (under voltage protection)
OCP (over current protection)
SCP (short circuit protection)
Reverse protection

Dimensions

Unit: mm

