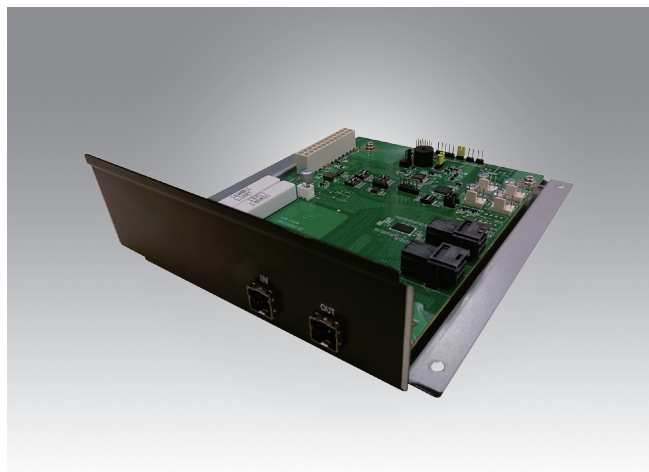


# ASR-1000K

## Flexible Expansion Module Fulfilling Various JBOD Demand



### Features

- Two Mini-SAS HD (SFF-8644) host ports
- Supports 12Gbps SAS protocol
- SES enclosure management & smart fan control
- Storage daisy chain & maximum 72 SAS/SATA HDDs
- Flexibly leverage HPC-8000 series chassis to build JBOD subsystems

### Specifications

System	Form Factor	I/O module	
	Back Panel I/O Port	2 mini-SAS HD (SFF-8644)	
	Internal I/O Connector	2 mini-SAS HD (SFF-8643)	
	SAS Interlink	2 SAS 12Gbps cables	
	Smart Fan Control	Yes	
Mechanical	Storage Daisy Chain	Yes, up to 72 drives	
	Dimension (W x H x D)	175 x 53.2 x 181.77 mm	
	Weight	500g	
Environment	Temperature	Operating	Non-operating
		System: 0 ~ 35° C	-40 ~ 85° C
	Board: 0 ~ 40° C		
Humidity	10% ~ 90%	10% ~ 95% (Non condensing)	
Misc	Notification LED	Power LED, System Alert LED, FAN Fault LED, Overheat LED	
	Button	Power button, Mute Button	

### I/O View



### TOP View



### Ordering Information

Part Number	Description
ASR-1000K-00A1E	JBOD kit for enclosure expansion function

### Packing List

Part Number	Description	Quantity
1700025064-01	Mini-SAS HD (SFF-8643) to mini-SAS HD (SFF-8643) 60cm cable	2
1990027192T000	Mylar for HPC-8316 front panel LED	1
1990028050T000	Mylar for HPC-8212/8224/8424 front panel LED	1
1990028046T000	Mylar for HPC-8212/8224/8424 front panel USB	1

### Optional Accessories

Part Number	Description
1700025067-01	Mini-SAS HD (SFF-8644) to mini-SAS HD (SFF-8644) 150cm cable
96PSR-A550W2U	550Watt redundant power supplies

### Compatible Enclosures

Part Number	Description
HPC-8316SA-00A1E	3U-16 bay short-depth storage chassis
HPC-8212SA-00A1E	2U-12 bay short-depth storage chassis
HPC-8224SA-00A1E	2U-24 bay short-depth storage chassis
HPC-8424SA-00A1E	4U-24 bay short-depth storage chassis