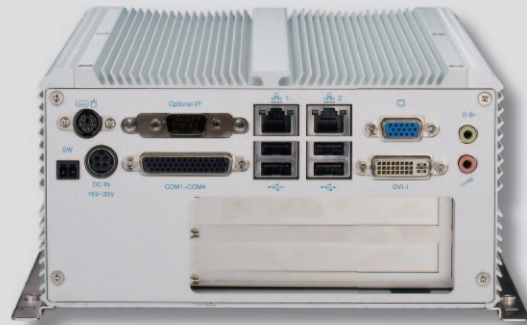


NISE 3500P2

Intel® Core™ i7/ i5 Fanless System with
VGA, DVI-I, eSATA and two Expansion Slot



Main Features

- ◆ Support Intel® Core™ i7/ i5 socket processor
- ◆ Mobile Intel® QM57 PCH
- ◆ Dual Intel® Gigabit Ethernet ports
- ◆ Dual VGA or VGA/ DVI Independent Display
- ◆ 3 x RS232 and 1 x RS232/ 422/ 485 with Auto Flow Control
- ◆ 4 x Digital Input, 4 x Digital Output
- ◆ On-board DC to DC power design to support 9V to 30V DC power input
- ◆ Support ATX power mode and PXE/ WOL

Product Overview

Utilizing 32nm Intel® Core™ i7/ i5 processor, NISE 3500 series feature Intel® Turbo Boost and Intel® Hyper-Threading technologies (2 cores, 4 threads), as well as on-processor graphics and two DDRIII 800/1066 memory modules up to 4GB. In addition, NISE 3500 provides a wide variety of display I/O configurations and rich I/O interfaces including two Intel® GbE Ethernet ports, 5x COM ports, 6x USB, 8x GPIO, 2x SATAII, 2x eSATA, audio interfaces. NISE 3500M has more features than NISE 3500, for example, it is equipped with 3x IEEE1394b ports and 1x HDMI port. NISE 3500 is designed for a broad range of applications which demand intense graphics performance, these include medical diagnostic equipment, medical imaging, data storage, industrial automation, public infotainment, surveillance security applications.

Specifications

Main Board

- ◆ NISB3500
- ◆ On board Mobile Intel® QM57 Platform Controller Hub
- ◆ Support Intel® Core™ i7-620M PGA Processor (2.66GHz, 4M Cache)
- ◆ Support Intel® Core™ i5-520M PGA Processor (2.4GHz, 3M Cache)
- ◆ Support Intel® P4500 PGA Processor (1.86GHz, 2M Cache)

Main Memory

- ◆ 2x 240-pin memory DIMM, up to 4GB DDR3 800/ 1066MHz SDRAM, unbuffered and non-ECC
- Note: Actual memory size is dynamic based on the OS I/O resource allocation

I/O Interface-Front

- ◆ ATX power on/ off switch
- ◆ HDD Access/ Power status LEDs
- ◆ 2 x USB2.0 ports
- ◆ 2 x eSATA ports

I/O Interface-Rear

- ◆ 2-pin Remote Power on/ off switch
- ◆ 9~30V DC input
- ◆ 1 x PS/ 2 for Keyboard / Mouse
- ◆ 1 x DB15 male connector for GPIO (4x digital-input and 4x digital-output)

- ◆ 1 x DB44 Serial Port for 4x RS232 (COM2: RS232/ 422/ 485 with auto flow control)
- ◆ 2 x GbE LAN ports
- ◆ 4 x USB2.0 ports
- ◆ 1 x DB15 VGA port
- ◆ 1 x DVI-I port
- ◆ 1 x Speaker-out and 1x Mic-in

Device

- ◆ 1 x 2.5" HDD driver bay

Expansion

- ◆ 2 x PCI expansion (Max. power consumption= 10w/ slot)
- ◆ Add-on card length: 169mm max.

Power Requirements

- ◆ ATX power mode
- ◆ On-board DC to DC power support from 9V to 30V DC
- ◆ Optional power adapter

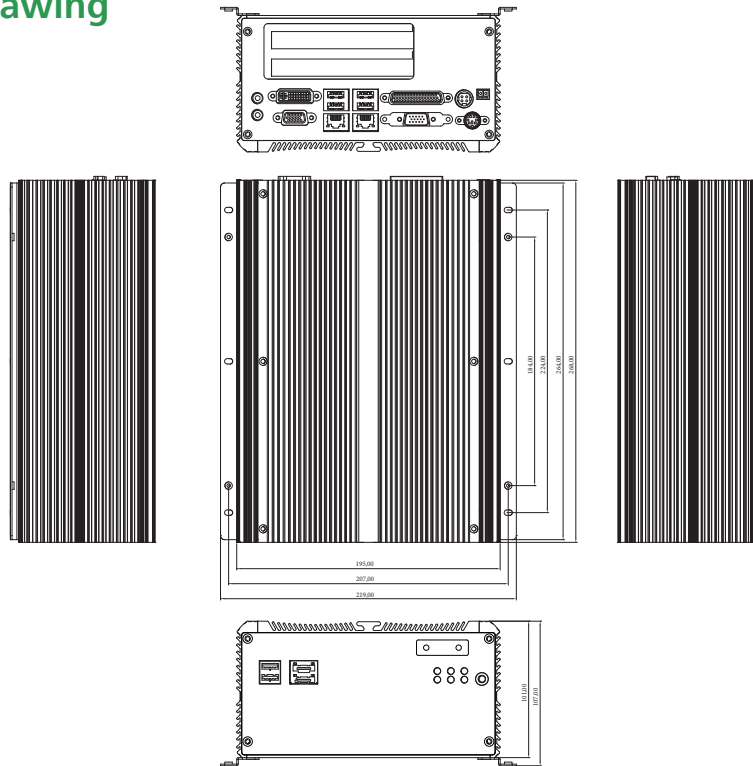
Dimensions

- ◆ 195mm (W) x 268 mm (D) x 101mm (H) (7.7" x 10.5" x 3.98")

Construction

- ◆ Aluminum Chassis with fanless design

Dimension Drawing



Environment

- Operating temperature:
Ambient with air flow: -5°C ~ 55°C
(According to IEC60068-2-1, IEC60068-2-2, IEC60068-2-14)
- Storage temperature: -20°C ~ 80°C
- Relative humidity: 10% to 93% (Non-Condensing)

Certifications

- CE approval
- FCC Class B

Ordering Information

Barebone

- **NISE 3500P2 (P/N: 10J00350002X0) RoHS Compliant**
Intel® Core™ i7/ i5 Fanless System with two PCI Expansion Slot
- **19V, 120W AC/DC Power Adapter w/o power core (P/N: 7410120002X00)**