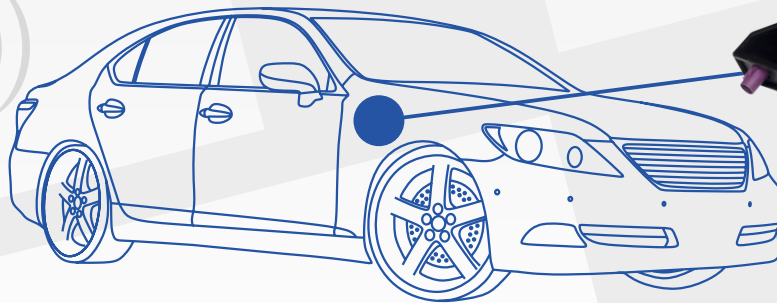
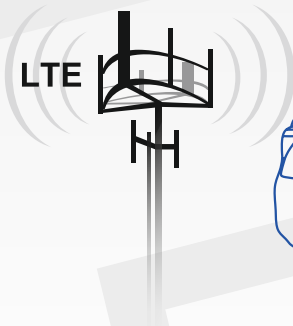




# RUT850

RUT850 is compact slim design LTE wireless router. Router support latest IEEE802.11b/g/n WLAN standards, LTE CAT4, provides GNSS capabilities.



Whether it is a long family trip, a camping spot or a need to access a backend office - RUT850 is a perfect choice. This sleek automotive router supports high speed LTE CAT4, which provides speeds of up to 150 Mbps DL and 50 Mbps UL.

Connect multiple devices, watch movies, video streams, or connect to remote surveillance equipment with ease. With support of latest IEEE802.11b/g/n WLAN standards you can be sure, that full LTE potential can be realized: no bottlenecks from LTE to WiFi.



Integrated GNSS (GPS and GLONASS) functionality enables location tracking and logging using TAVL (Teltonika Automatic Vehicle Locator) server. Geo-fencing functionality provides additional security - you can receive SMS/Email notification when device moves out of pre-defined geographical area. Location can also be received by SMS on demand.

RUT850 can be used either in light vehicles or busses, trucks and other heavy transport, which utilizes 24V battery. This is achieved by wide input voltage range (7-30 VDC) and voltage surge protection - no need for additional surge protection equipment. Power supply socket connector has an ignition digital input, which controls router's sleep mode status.



Set up your internet connectivity and be ready to go in minutes with just a few clicks from your smartphone. Manage and monitor router's performance without physically connecting to the device.

Manage your routers fleet remotely. With full support of centralized Teltonika Remote Management System you will be able to access, control and monitor all of your routers within a single platform. This will help you make better decisions for future installments and best-use practices.



## HARDWARE

- LTE
- WiFi
- GNSS\*
- 9 - 30 VDC
- Internal WiFi Antenna
- Input for Ignition
- SIM Card Drawer

\*Versions without GNSS are available.

## SOFTWARE

- Dynamic DNS
- Periodic Reboot
- SMS Control / Gateway
- Mobile on Demand
- Hotspot
- Mobile Quota Control
- Backup WAN
- NTP
- Ping Reboot
- Web Filter
- Sleep Mode

Technology/Version	Europe, the Middle East, Africa, Korea, Thailand, India RUT850 3xxxxx	North America (Verizon) RUT850 5xxxxx	South America, Australia, New Zealand, Taiwan RUT850 7xxxxx
	Bands		
LTE	FDD B1/B3/B5/B7/B8/B20 TDD B38/B40/B41	FDD B4/B13	FDD B1/B2//B3/B4/B5/B7/B8/B28 TDD B40
3G	850/900/2100 MHz	-	850/900/1900/2100 MHz
2G	900/1800 MHz	-	850/900/1800/1900
Technology/Version	Data rates (DL/UL)		
LTE	FDD 150/50 Mbps TDD 130/35 Mbps	FDD 150/50 Mbps	FDD 150/50 Mbps TDD 130/35 Mbps
DC-HSPA+	42/5.76 Mbps	-	42/5.76 Mbps
WCDMA	384/384 kbps	-	384/384 kbps
EDGE	296/236.8 kbps	-	296/236.8 kbps

## ELECTRICAL, MECHANICAL & ENVIRONMENTAL

Dimensions (H x W x D) 131 mm x 79 mm x 18 mm

Weight 110 g

Input voltage range 9 - 30 VDC

Overvoltage protection up to continuous 60 VDC

Power consumption < 5 W

Operating temperature -40 °C to 75°C

Storage temperature -45 °C to 80 °C

Operating humidity 10 % to 90 % non-condensing

Storage humidity 5 % to 95 % non-condensing

## WiFi

IEEE 802.11b/g/n WiFi standards

AP and STA modes

64/128-bit WEP, WPA, WPA2, WPA&WPA2 encryption methods

2.401-2.495 Ghz WiFi frequency range\*\*

20dBm max WiFi TX power

SSID stealth mode and access control based on MAC address

\*\*Supported frequency bands are dependent on geographical location and may not be available in all markets.

