



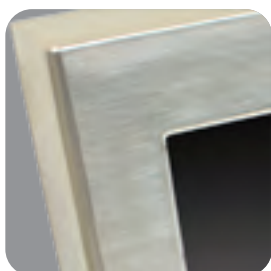
WP Series: Full IP65 Touch Panel PC

*360° protection against
intrusion of dust, water,
oil, or corrosive materials*

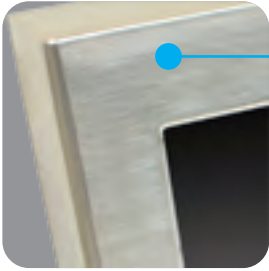
Features

- IP65 compliant 6-sided stainless steel chassis
- IP65 waterproof stainless steel connectors
- Standard / IP65 rated external power adapter

Specially suitable for dusty / humid / oily / corrosive industrial environments



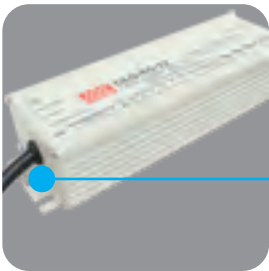
WP Series Full IP65 Touch Panel PC



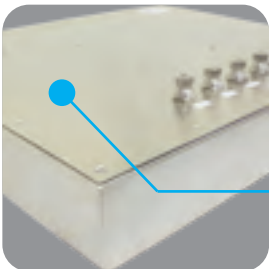
● IP65 compliant 6-sided sealed stainless steel chassis
*to prevent liquid / dust from getting into the housing and
to resist acid- / alkali-based cleaning agents from corroding the device*



● IP65 waterproof stainless steel connectors
to prevent liquid from getting into the housing via the cable entry points

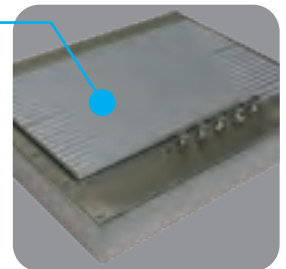


● IP65 rated external power adapter (alternative)
*to prevent liquid from getting into the interior of the adapter
from the junction of the shell*



● External heat sink (on the rear for WP-AN Series with Core i5 Turbo up to 2.7GHz CPU & WP-GN Series only)
to faster dissipate the heat to keep excellent CPU performance

● No external heat sink (for WP-AN Series with Core i5 1.8GHz / Celeron CPU & WP-2L / -7L / -8L / -9L / -BL / -EN / -FN Series)



● I/O connectors are located on the bottom
for 10.4" ~ 15" device

*I/O connectors are located on the rear
for 17" ~ 21.5" devices*



● RFID sensor (optional)
*to enable RFID technology application, such as logistics,
warehousing, distribution or industrial automation
(identification of workpiece carriers on assembly lines, material
flow control, identification of containers and other receptacles)*

WP Series Full IP65 Touch Panel PC

Challenges

For a PC-based automation system installed in some industrial environments such as food processing factories, car washing stations, petroleum plants or pharmaceutical facilities, moisture, grease and dust resistance is an important criterion to ensure high reliability against harsh conditions. IP65 rating is the most commonly used index when an industrialist purchases waterproof industrial PCs.



Waterproof



Dustproof



Anti-oil



Corrosion-proof

Solutions

Kingdy's WP Series is the very full IP65 touch panel PC featuring the following protection designs.

- **Dustproof / Waterproof full IP65 chassis, connector and power adaptor** not only to prevent dust and water from invading the inner sensitive components but also to allow the device to be washed down
- **Corrosion-proof and anti-oil stainless steel chassis** not only to prevent corrosion generated by acid, alkali and salt but also to facilitate cleaning and maintenance

Applications



Foodstuff, Pharmaceuticals



Logistics, Warehousing Distribution



Military



Petroleum, Chemistry, Petrochemistry



Industrial automation

WP-EN Series (Intel J1900)



-  CPU Performance 
-  Energy Efficiency 
-  Touch Function 
-  Dissipation Design **Fanless, No external heat sink**
-  Waterproof Design **IP65 chassis, IP65 connectors, IP65 power adaptor (alternative)**
-  Housing Design **Stainless steel**

| | |
|-----------------------|--|
| CPU | Intel® Bay Trail D-J1900 2.0GHz Quad Core Processor (CPU OnBoard) |
| Memory | 2 x 204-pin SODIMM Dual-channel DDR3L 1333 / 1066MHz up to 8 GB |
| Power Supply | Standard / full IP65 DC in 12V external power adaptor |
| I/O Ports (Default) | 2 x RS232, 1 x GLAN, 1 x USB, 1 x SATA socket |
| I/O Ports (Optional) | Any combination of up to 3 x RS232, 3 x GLAN, 4 x USB but totally no more than 4 |
| Expansion | 1 x Mini PCIe slot (with mSATA function) |
| Operation Temperature | 0°C ~ 45°C |
| Storage Temperature | -10°C ~ 70°C |
| Relative Humidity | 10% ~ 90% non-condensing |
| OS | Win 7 Pro, Embedded 7, Win 8 Pro, Embedded 8 |
| Installation | VESA mount 100 x 100 mm |
| Optional Items | RFID sensor, No touch screen, Memory, Storage devices, WiFi, OS |

| Model Name | | WP-ENR12RF | WP-ENS12RF | WP-ENL15RF |
|-----------------------------------|--------------------------------|------------------|------------------|-------------------|
| Display | Size / Aspect Ratio | 12.1" TFT (4:3) | 12.1" TFT (4:3) | 15" TFT (4:3) |
| | Backlight | CCFL | LED | LED |
| | Resolution | 800 x 600 | 1024 x 768 | 1024 x 768 |
| | Colors | 16.2 M | 16.2 M | 16.2 M |
| | Luminance (cd/m ²) | 400 | 500 | 400 |
| | Contrast Ratio | 600:1 | 700:1 | 700:1 |
| | Viewing Angle (H/V°) | 160/120 | 160/160 | 160/160 |
| | MTBF (hrs) | 50,000 | 50,000 | 50,000 |
| | Touch Screen | 5-wire resistive | 5-wire resistive | 5-wire resistive |
| Dim. (W x H x D+heatsink, mm) | | TBD | TBD | 380 x 290 x 67+10 |
| Weight (main unit + heatsink, kg) | | 8.5+1 | 8.5+1 | 10.5+1 |
| I/O Port's Location | | Bottom | Bottom | Bottom |

| Model Name | | WP-ENR17RF | WP-ENL17RF | WP-ENL19RF | WP-END21RF |
|---------------------------|--------------------------------|------------------|------------------|------------------|------------------|
| Display | Size / Aspect Ratio | 17" TFT (4:3) | 17" TFT (4:3) | 19" TFT (4:3) | 21.5" TFT (16:9) |
| | Backlight | CCFL | LED | LED | LED |
| | Resolution | 1280 x 1024 | 1280 x 1024 | 1280 x 1024 | 1920 x 1080 |
| | Colors | 16.7 M | 16.7 M | 16.7 M | 16.7 M |
| | Luminance (cd/m ²) | 300 | 350 | 250 | 300 |
| | Contrast Ratio | 800:1 | 1000:1 | 1000:1 | 5000:1 |
| | Viewing Angle (H/V°) | 140/125 | 140/170 | 170/160 | 178/178 |
| | MTBF (hrs) | 50,000 | 50,000 | 50,000 | 50,000 |
| Touch Screen | | 5-wire resistive | 5-wire resistive | 5-wire resistive | 5-wire resistive |
| Dimension (W x H x D, mm) | | 425 x 361 x 68 | 425 x 361 x 68 | 455 x 367.6 x 67 | TBD |
| Weight (kg) | | 15.5 | 15.5 | 15.5 | 17.5 |
| I/O Port's Location | | Rear | Rear | Rear | Rear |